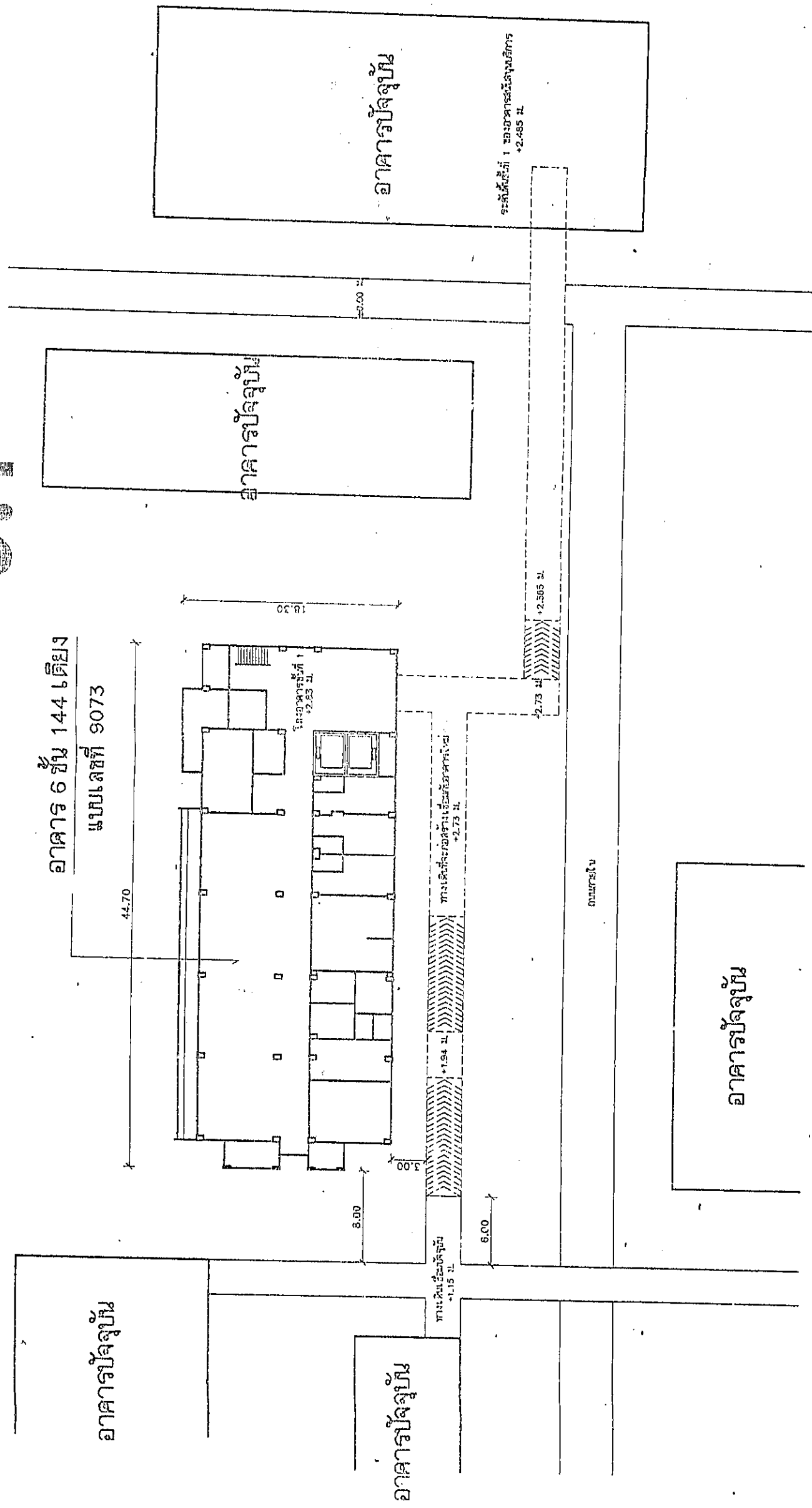


51



แสดงตำแหน่งก่อสร้างอาคาร 144 เดียง

1 : 400

This architectural drawing shows a plan view of a building complex. The complex consists of several rectangular blocks of buildings arranged in a grid-like fashion. The buildings are depicted with internal room divisions and some have small rectangular protrusions, possibly representing windows or doors. A series of numbered callouts (1 through 8) are placed around the drawing, with lines pointing to specific features: 1 points to a small building on the right; 2 points to a larger building on the right; 3 points to a building on the right; 4 points to a building on the right; 5 points to a building on the right; 6 points to a building on the right; 7 points to a building on the right; 8 points to a building on the right. A section line, labeled 2-2, is drawn across the middle of the complex, indicating the location of a cross-section. The drawing is a black and white line drawing with a grid of dashed lines.

১৯৮৫

[illegible]

Architectural floor plan of a building, likely a school or institutional structure. The plan shows various rooms, corridors, and outdoor areas. Key areas include a large central hall, several classrooms or lecture halls, and a large outdoor area on the right. The plan is oriented with a north arrow pointing towards the top right. The drawing is a detailed technical sketch with various annotations and dimensions.

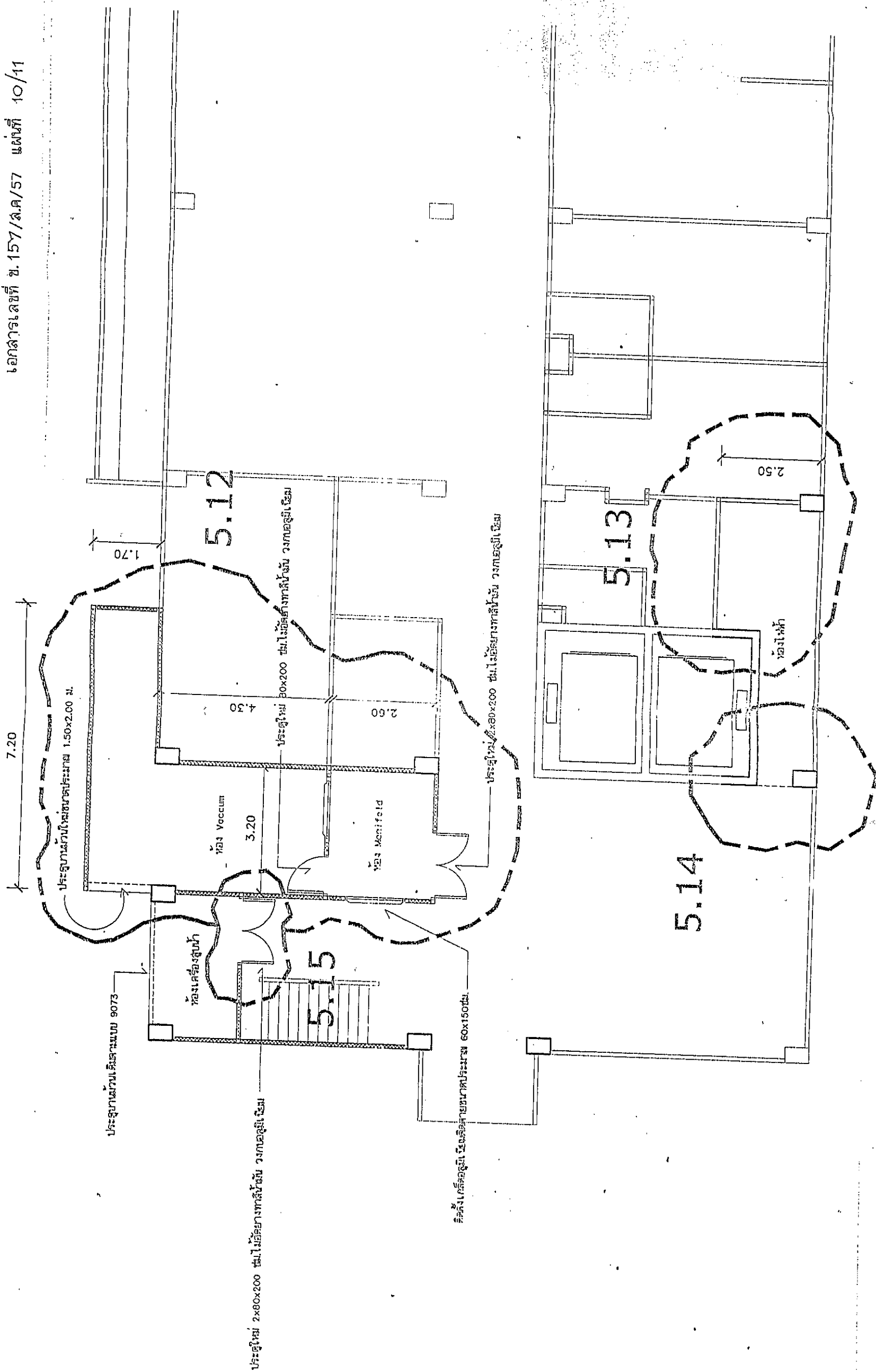
Dimensions and room numbers are indicated throughout the plan. For example, the central hall has a width of 12.00 and a length of 12.00. The outdoor area on the right is labeled 5.3. The plan also shows various rooms, corridors, and outdoor areas, with dimensions and room numbers indicated throughout.

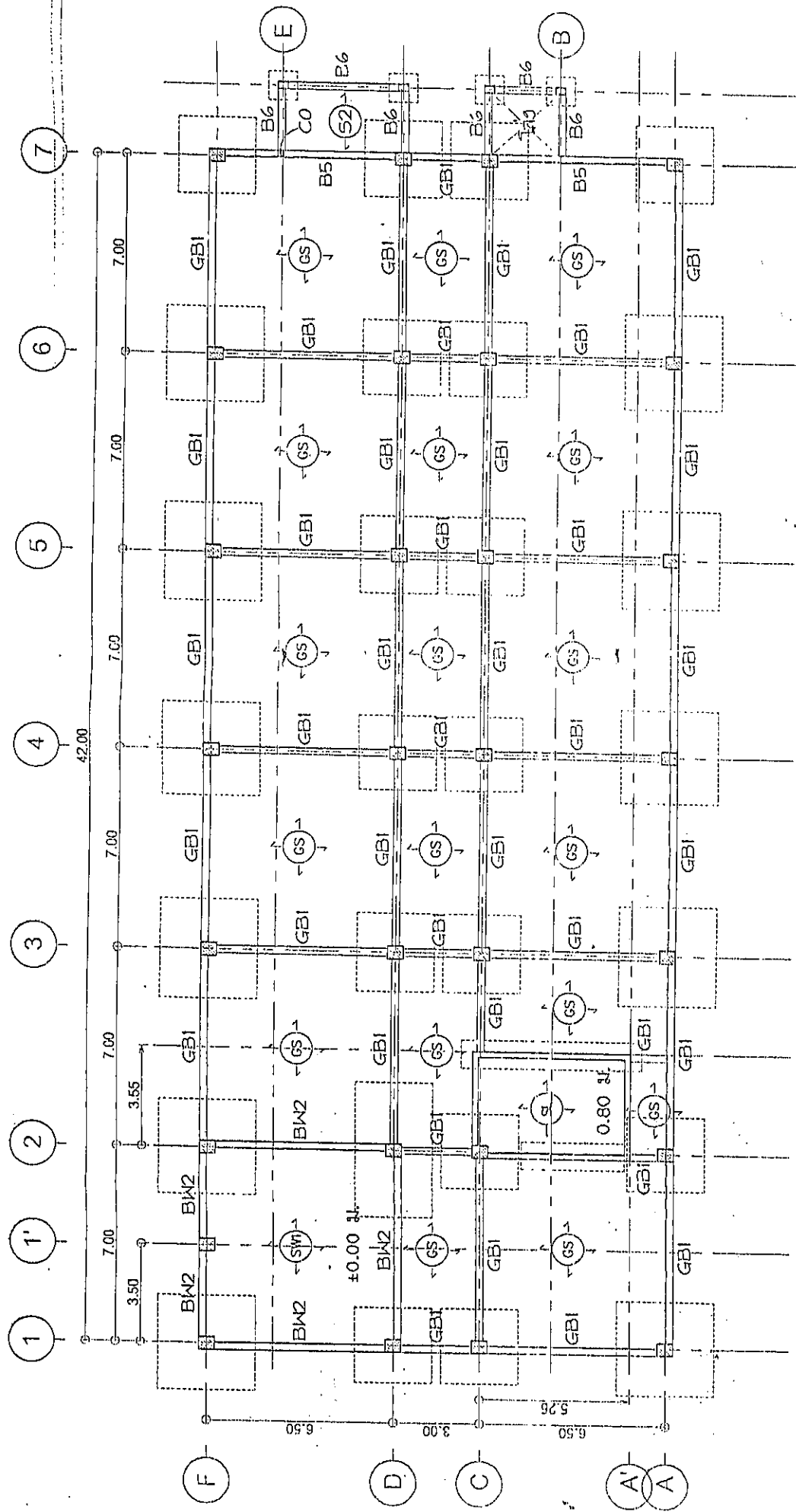
5.4

5.3

[illegible]

[illegible]





แปลนพื้นระดับ ±0.00 ม.  
SCALE 1 : 200

Wire Mesh dia. 6mm @ 0.20m.

0.05 0.10 0.02

PU Sealant ลิมา

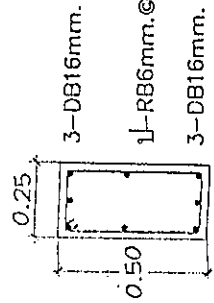
1/2 ขนาด 2 มม

การขุดชั้นดิน

ที่เดิมชั้นดิน

พื้นที่ GS

SCALE no.



หมายเหตุ

3-DB16mm.

1-DB16mm. @ 0.20m.

3-DB16mm.

1. แปลนพื้นระดับ ±0.00 ม. ให้ยึดแบบตามเอกสารเลขที่ 157/ล.ค./57
2. แบบฐานรากและเสาให้ยึดตามแบบเลขที่ 9073 เจาะลั่วที่เกี่ยวของ
3. ระดับหลังฐานรากอยู่ต่ำกว่าระดับ ±0.00 ม. ประมาณ 1.00 ม.
4. มุมเสาทุกต้น ให้มีแนวตั้งฉาก ให้ติดเหล็ก L 50x50x4 มม. (ยกเว้นเสา C6)